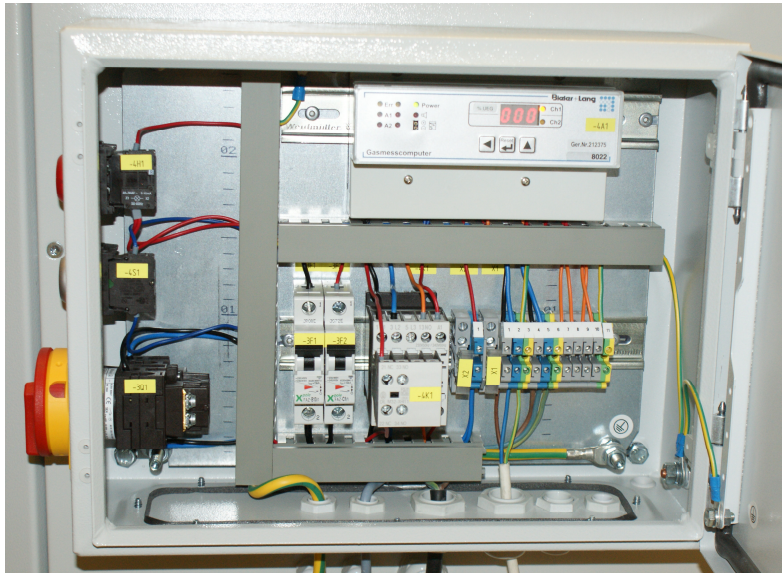


# Leakage Control System LCS1



The **LCS1** is used for monitoring the interior of cabinets which contain gas-carrying components such as those existing in gas analyzing systems for mine gas, waste landfill site gas, digester gas or biogas.

Any leakage in the cabinet interior of gas analyzing systems may result in explosive gas concentrations. Not being provided with an own explosion protection,

the systems need to be monitored respectively. In the event of a leakage, the completely controlled system will be switched off the voltage by the LCS1. The system will not be re-connected to the supply voltage before the gas concentration falls short of the preset gas limit value. The measuring sensor probe installed in the system is approved for being operated in the zones 1 and 2 of explosion risk areas according to the requirements for explosion proof equipment.

## Technical Data

<b>Gas measuring computer:</b>	<b>EC-type test certificate BVS 03 ATEX G 007 X</b>
<b>Limit value pre-alarm:</b>	<b>methane content of 0.45 % by volume</b>
<b>Limit value alarm:</b>	<b>methane content of 0.9 % by volume</b>
<b>Ignition protection type of measuring sensor probe:</b>	<b>EEx de [ib] IIC T6</b>
<b>Measuring principle:</b>	<b>heat effect</b>
<b>Approval for sensor probe:</b>	<b>PTB 00 ATEX 1075</b>
<b>Control elements:</b>	<b>main switch, reset, alarm display</b>
<b>Alarm outputs:</b>	<b>potential-free group alarm</b>
<b>Supply voltage:</b>	<b>230V, 50Hz</b>
<b>External pre-fuse:</b>	<b>16A maximum</b>
<b>Dimensions:</b>	<b>B380xH300xT155mm</b>
<b>Protection class:</b>	<b>IP65</b>

